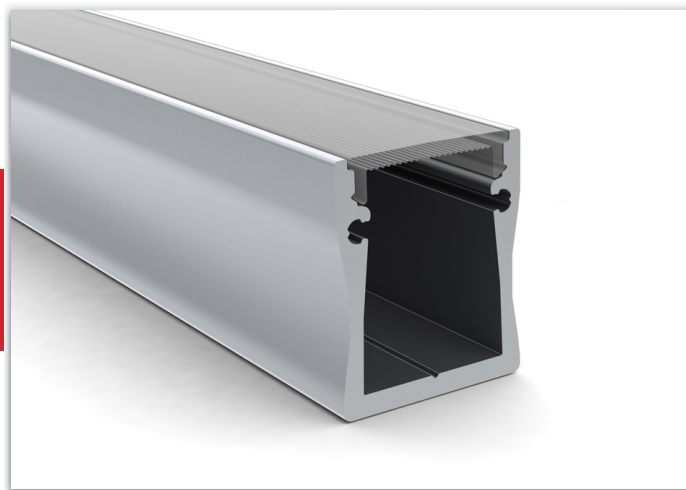


## ARDRA WIDE 20 -en- LINEAR LIGHTING o 114



### INDOOR LED PROFILE

#### APPLICATIONS:

- Independent wall lamp, ceiling or hanging
- Overhead lighting with an higher light intensity (retail / offices / restaurants / hotels / hospitals / houses)
- Linear architectural lighting
- Interior design projects

#### DESCRIPTION:

Material: Natural anodised aluminum with transparent or opaline diffuser, resistant to UV rays and shocks.

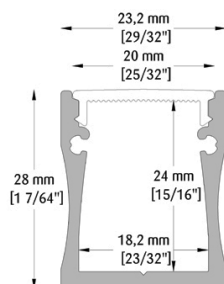
Dimensions: 28 mm in height and 23,2 mm in width. Minimum length 30cm, maximum 300cm (other sizes on request)



IP40



### DATA SHEET



### CHARACTERISTICS

LED module: mid-power LEDs on metal core PCB

#### PCB LED 10W

| W/mt | K    | lm/mt | LED/mt - Type - V    | CRI |
|------|------|-------|----------------------|-----|
| 10   | 2700 | 1140  | 168 - SMD 2835 - 24V | >90 |
| 10   | 3000 | 1220  | 168 - SMD 2835 - 24V | >90 |
| 10   | 4000 | 1300  | 168 - SMD 2835 - 24V | >90 |

#### PCB LED 20W

| W/mt | K    | lm/mt | LED/mt - Type - V    | CRI |
|------|------|-------|----------------------|-----|
| 20   | 2700 | 2370  | 168 - SMD 2835 - 24V | >90 |
| 20   | 3000 | 2520  | 168 - SMD 2835 - 24V | >90 |
| 20   | 4000 | 2600  | 168 - SMD 2835 - 24V | >90 |

## ARDRA WIDE 20 -en- LINEAR LIGHTING Ø 114

### LED CCT 24V

| W/mt | K          | lm/mt | LED/mt - V | CRI |
|------|------------|-------|------------|-----|
| 16   | 1800/3000K | 720   | 192 - 24V  | 90+ |
| 16   | 2700/6000K | 1300  | 120 - 24V  | 90+ |
| 18   | 2700/6000K | 1800  | 240 - 24V  | 90+ |
| 28   | 2700/6000K | 4000  | 192 - 24V  | 80+ |

### LED RGB 24V

| W/mt | K               | lm/mt | LED/mt - V | CRI |
|------|-----------------|-------|------------|-----|
| 14   | COB RGB DIGITAL | -     | 720 - 24V  | -   |
| 16   | COB RGB + 3000K | -     | 896 - 24V  | -   |

### NOTES AND ACCESSORIES

- Controller for RGB management and light dimmer dimming.
- Standard cable length 1500mm, other sizes on request.
- Power supplies not included, to be ordered separately.

Last update: 6 December 2024