

## ARDRA WIDE 15 -en- LINEAR LIGHTING o 033

### INDOOR LED PROFILE

#### APPLICATIONS:

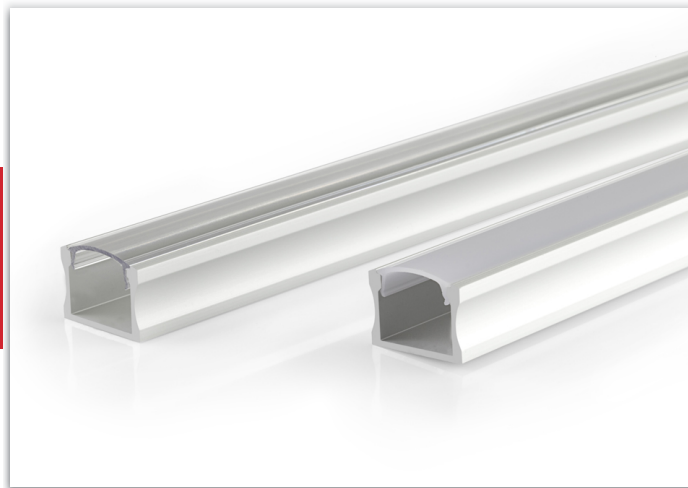
- Independent wall lamp, ceiling or hanging
- Overhead lighting with an higher light intensity (retail / offices / restaurants / hotels / hospitals / houses)
- Linear architectural lighting
- Interior design projects

#### DESCRIPTION:

Material: Natural anodised aluminum with transparent or opaline diffuser, resistant to UV rays.

Dimensions: 15,66 mm in height and 22,60 mm in width.

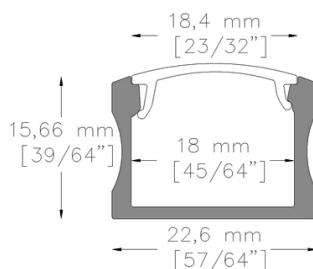
Minimum length 30cm, maximum 200cm (other sizes on request)



IP40



### DATA SHEET



### CHARACTERISTICS

LED module: mid-power LEDs on metal core PCB

#### PCB LED 11W/mt

W/mt	K	lm/mt	LED/mt - Type - V	CRI
10	2700	1140	168 - SMD 2835 - 24V	>90
10	3000	1220	168 - SMD 2835 - 24V	>90
10	4000	1300	168 - SMD 2835 - 24V	>90

#### PCB LED 22W/mt

W/mt	K	lm/mt	LED/mt - Type - V	CRI
20	2700	2370	168 - SMD 2835 - 24V	>90
20	3000	2520	168 - SMD 2835 - 24V	>90
20	4000	2600	168 - SMD 2835 - 24V	>90

## ARDRA WIDE 15 -en- LINEAR LIGHTING O 033

### LED CCT 24V

W/mt	K	lm/mt	LED/mt - V	CRI
16	1800/3000K	720	192 - 24V	90+
16	2700/6000K	1300	120 - 24V	90+
18	2700/6000K	1800	240 - 24V	90+
28	2700/6000K	4000	192 - 24V	80+

### LED RGB 24V

W/mt	K	lm/mt	LED/mt - V	CRI
14	COB RGB DIGITAL	-	720 - 24V	-
16	COB RGB + 3000K	-	896 - 24V	-

### NOTES AND ACCESSORIES

- Touch switch or sensor pir.
- Controller for RGB management and light dimmer dimming.
- Standard cable length 1500mm, other sizes on request.
- Power supplies not included, to be ordered separately.

Last update: 6 December 2024